

# CALLING ALL DISABLED RESIDENTS

Calling All Career Starters, Changers, Advancers, and Professionals!  
Be part of the change our communities deserve.

Join a dynamic healthcare professionals' training program offered by the District's  
only two Historically Black Colleges & Universities. *Find your possible!*



The Public Health IT4DC (PHIT4DC) Consortium Experiential Course provides  
D.C. disabled residents with 21st century IT knowledge and skills to provide the  
high-quality healthcare services ALL District residents deserve.

## Healthcare Career STARTERS



### Eligibility Criteria

- District resident
- At least 18 years\*
- Students pursuing their HSD or GED

## Healthcare Career CHANGERS



### Eligibility Criteria

- At least 18 years\*
- Students pursuing their HSD or GED
- Currently employed in any field

## Healthcare Career ADVANCERS



### Eligibility Criteria

- At least 18 years\*
- Minimum HSD or GED
- Employed in an existing healthcare role

## Healthcare Career PROFESSIONALS



### Eligibility Criteria

- Currently interested in any degree-seeking pathway at Howard, UDC, or CUWMA institution

Watch a helpful video on the PHIT4DC program, see program information, requirements, industry-recognized certifications, and student incentives:



For more information: [PHIT4DC@udc.edu](mailto:PHIT4DC@udc.edu) | [PHIT4DC.com](http://PHIT4DC.com)



# PHIT4DC

University of the District of Columbia / Howard University

Public Health Informatics Technology for the District of Columbia



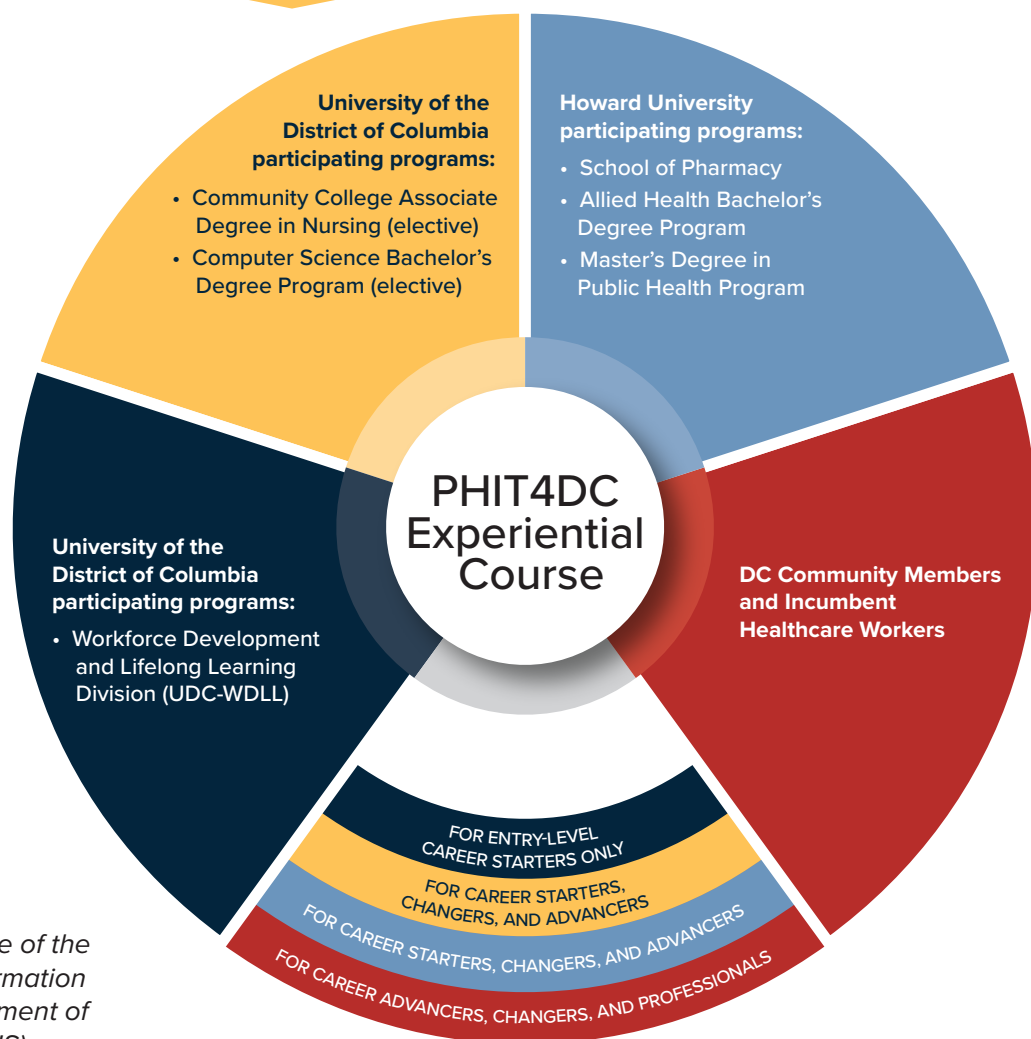
## So How Does It Work?

### PHIT4DC Experiential Course

- Offered every semester at the University of the District of Columbia and Howard University
- Gain acceptance into an associated degree program of your choice and/or earn industry-recognized certifications to bolster your career



SCAN FOR THE  
PROGRAM APPLICATION



*This project is supported by the Office of the National Coordinator for Health Information Technology (ONC) of the U.S. Department of Health and Human Services (HHS).*

